



UNIVERSITÉ
JEAN MONNET
SAINT-ÉTIENNE

WELCOME TO JEAN MONNET UNIVERSITY !

INTERNATIONAL STUDENT GUIDE



DISCOVERING

JEAN MONNET UNIVERSITY

06

- Key figures
- One university, 5 campuses
- Studying at Jean Monnet University
- International Office

PREPARING

YOUR ARRIVAL

12

- Applying to UJM
- Visa and residence permit
- Financing your stay
- Cost of living in Saint-Etienne
- Health
- Accommodation

STUDYING

AT JEAN MONNET

22

- Welcome on the campuses
- Take French courses
- Sport activities
- Eating out
- Getting around
- Students associations
- Peer-to-peer student mentoring
- SWD

LIFE IN

SAINT-ETIENNE

28

- Places to see
- Where to go ?
- Annual events
- Good deals

USEFUL

INFORMATION

34

- How to get to Saint-Etienne ?
- Some tips
- Useful links
- Contact, who to contact ?



Welcome to Saint-Etienne and thank you for choosing Jean Monnet University!

Whether you apply for a Bachelor or a Master degree, at the Faculty of Science, Art, Law, or Engineer School; UJM guarantees a high-quality training and personal welcome to each one of its students. Strong of its multidisciplinary nature, UJM offers a wide possibility of trainings, in line with modern society's needs. Offering a special expertise to its 20 179 students, the University guide them towards success and professional integration, in a rich and dynamic environment.

UJM stands out by its deep ties with the local territory, with the socioeconomic sector as much as cultural and artistical institutions. A particular attention is also given to the work of researchers, with numerous possibilities of internships and trainings. In its will to reinforce its international opening, UJM works with higher-education establishments in and outside Europe, allowing 2108 foreign students to integrate its rich student life. To study in Saint-Etienne is a great way to expand your horizon!

With the 'Bienvenue en France' label obtained in 2019 for the quality of its welcome services for foreign students, UJM also offers French as a Foreign Language trainings, in order to prepare and accompany the integration into higher education (CILEC); a mutualized Students Welcome Desk (outdoor activities, festive time and administrative support) and mentoring devices.

To study abroad, you need to get ready! How to find an accommodation, a doctor, to open a bank account... Is it possible to work alongside my studies, how much money should I collect for my stay... It is important to think about all of these questions and to prepare yourself, so you can integrate more easily and focus on your courses with a quiet state of mind. This guide will give you every information in order to help you with all of your administrative procedures. The UJM team stays at your disposal if you have any question!

Welcome to Jean Monnet University!
You did the right choice!

9 REASONS TO STUDY AT UJM



**STUDYING IN A
STUDENT CITY WITH
28,500 STUDENTS AND
11,500 RESEARCHES**



**DISCOVER A
COSMOPOLITAN CITY
AND UNIVERSITY WITH
120 NATIONALITIES**



**A STUDENT CITY AT A
LOW PRICE.
AFFORDABLE RENTS,
UNBEATABLE
TRANSPORT PRICE...
THE BUDGET IS
BALANCED. EVERYTHING
BECOMES POSSIBLE !**



**A CITY WITH A GREEN
HEART : 780 HECTORES
O GREEN SPACES, 13KM²
OF FORESTS, 15 PARKS,
80 SQUARES AND
GARDENS**



**AN UNIVERSITY IN THE
HEART OF THE ONLY
FRENCH CITY
DESIGNATED AS A
UNESCO CITY OF DESIGN**



**A SPORTING AND
CULTURAL CITY, IN THE
TOP 5 OF FRENCH ACTIVE
AND SPORTING CITIES**



**A PLURIDISCIPLINAL
UNIVERSITY**



**A WELCOMING
UNIVERSITY WITH
UNIQUE FACILITIES FOR
INTERNATIONAL
STUDENTS**



**ENJOY A GOURMET
AND FESTIVE CITY**

DISCOVERING JEAN MONNET UNIVERSITY

- Key figures
- One university, 5 campuses
- Studying at UJM
- International Office

Key figures



2nd

HOST REGION FOR FOREIGN STUDENTS IN FRANCE

More than 42.000

INTERNATIONAL STUDENTS

18th

CITY OF THE STUDENT MAGAZINE
AWARDS L'ÉTUDIANT (AMONG 43 CITIES)

28.500

STUDENTS IN ST ETIENNE

4th

FRENCH MEDIUM-SIZED CITIES WHERE
IT IS GOOD TO STUDY - L'ÉTUDIANT

405.000

INHABITANTS IN ST ETIENNE

20.179

STUDENTS AT UJM



2.108

INTERNATIONAL STUDENTS AT UJM

110

NATIONALITIES REPRESENTED AMONG
STUDENTS

450

RESEARCHERS AND PHD STUDENTS

More than 60

NATIONALITIES REPRESENTED AMONG
RESEARCHERS

More than 300

PARTNERS IN AND OUTSIDE EUROPE

One university 5 campuses



**CAMPUS of
ROANNE**



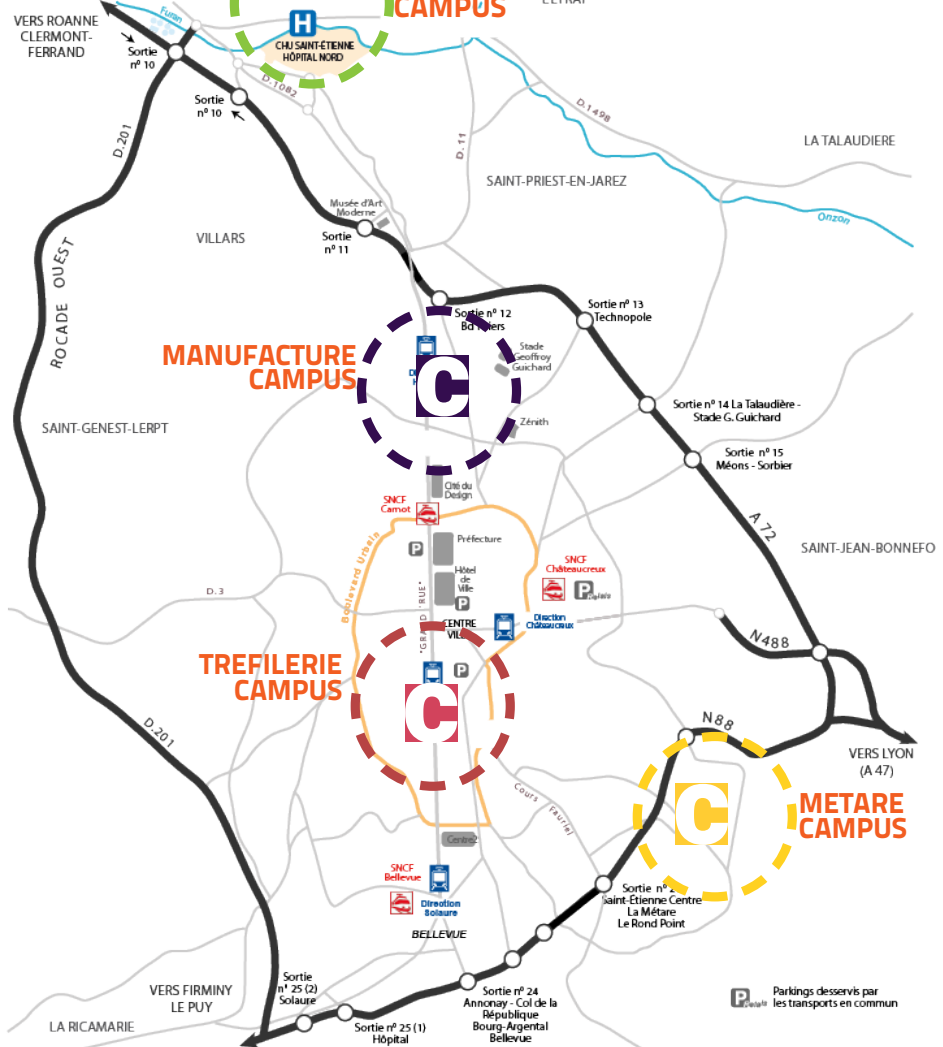
**HEALTH
INNOVATIONS
CAMPUS**


**MANUFACTURE
CAMPUS**

**TREFILERIE
CAMPUS**



**METARE
CAMPUS**



 Parkings desservis par
les transports en commun



Headquarter
> Central services
> Student life
> Labour Institute

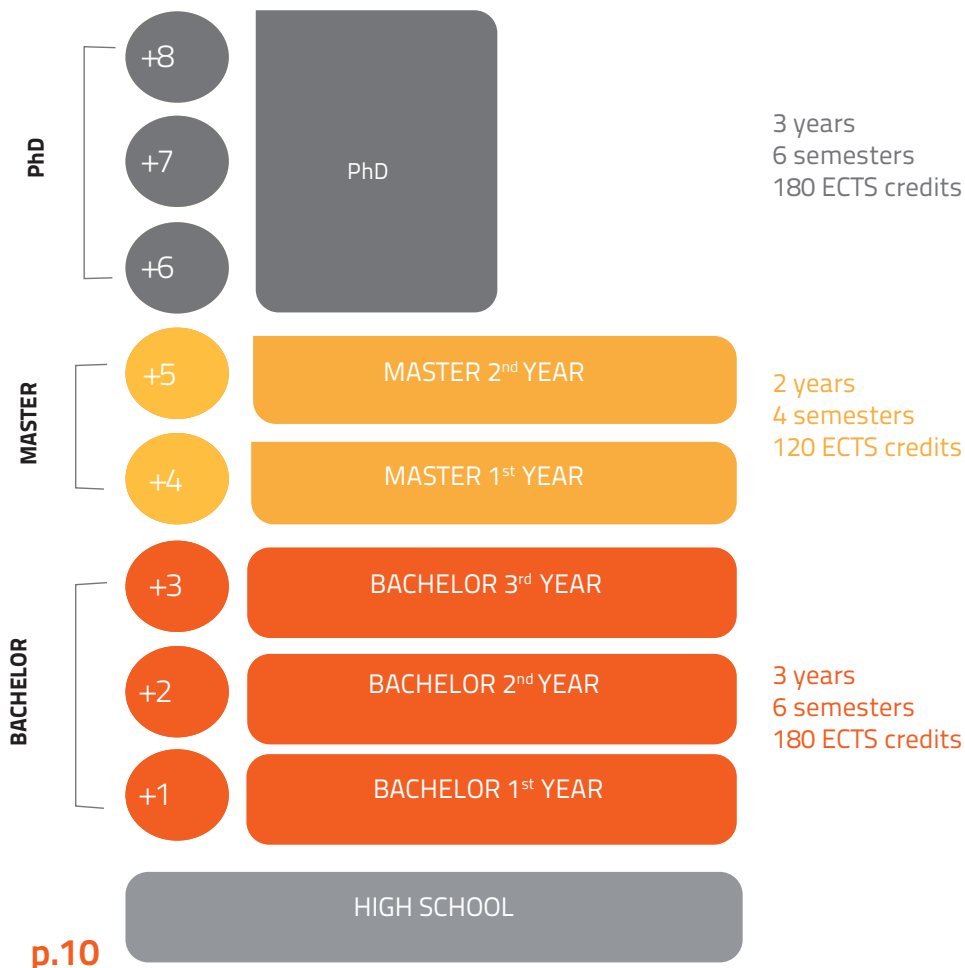


Denis Papin Building
> Sports hall
> SUPAS
> International Office
> CILEC



Studying at Jean Monnet University

Courses offered at Jean Monnet University are based upon the European Credit Transfert System (ECTS). According to this sytem, a full-time student will obtain 60 credits for an academic year. These credits can be transferred in France and in Europe.



International Office

The mission of the International Department of Jean Monnet University is to help, support and accompany foreign students when they arrive in Saint-Etienne.

The team is here to help you !

- In the administrative procedures
- To set up your file
- For your visa and residence permit
- To find accommodation
- To create a French bank account
- To join the French social security system
- To facilitate your integration through the organisation of cultural activities
- To offer you French courses through CILEC
- In general, to answer your questions !



WHERE TO FIND US ?

International Office
21, Denis Papin Street
42023 Saint-Etienne
First entrance, Second Floor



OPENING HOURS

Monday-Tuesday
Wednesday-Friday
8.30 am - 12.30 pm
1.30 pm - 5 pm

**Open only by appointment
on Thursday**



PREPARING YOUR ARRIVAL

- Applying to UJM
- Visa and residence permit
- Financing your stay
- Cost of living in Saint-Etienne
- Health and insurance
- Accommodation

Applying to UJM

YOU ARE A NON-EXCHANGE STUDENT? YOU WANT TO APPLY TO A DEGREE PROGRAMME?

Students who wish to come to the UJM without a partnership agreement between the Jean Monnet University and the university of origin, must go through different platforms depending on their country of residence.



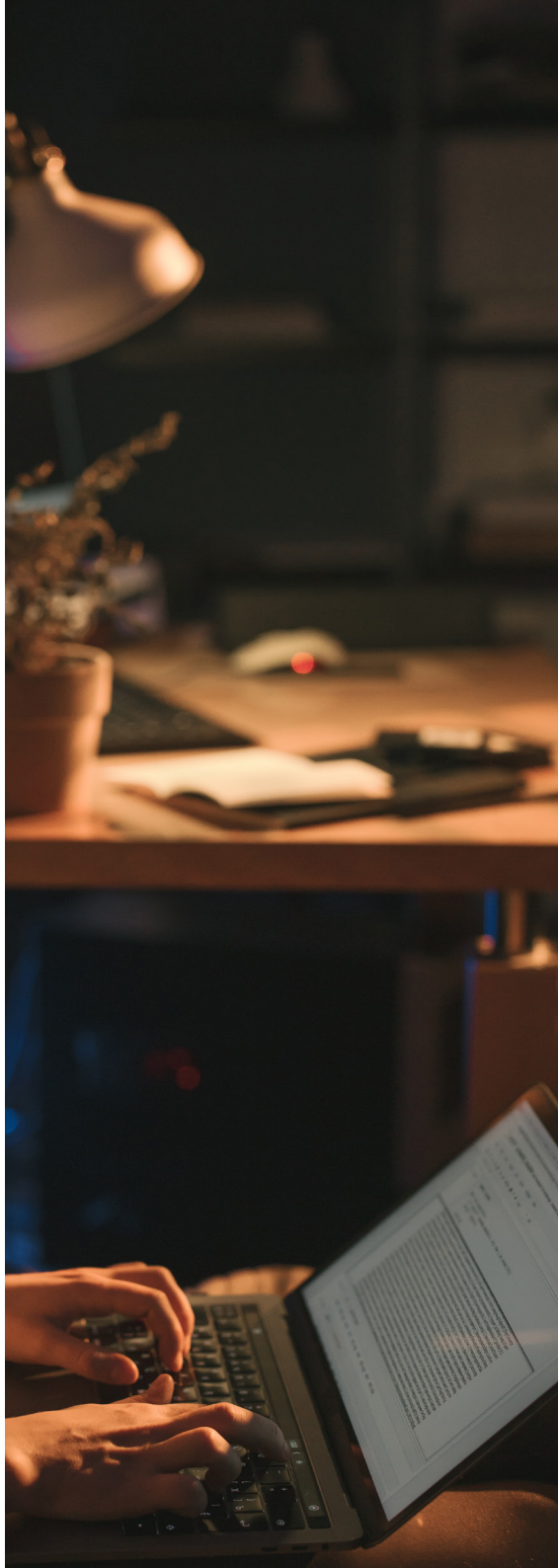
If your country of residence is covered by the Campus France application procedure, you must submit an application on the Etudes en France website : <http://pastel.diplomatie.gouv.fr/etudesenfrance>



If you live in a country that is not covered by the Campus France procedure, you must submit an application file on the Jean Monnet University E-Candidat platform <https://candidatures2.univ-st-etienne.fr>

YOU ARE AN ERASMUS OR NON-ERASMUS EXCHANGE STUDENT?

Students who wish to stay in UJM within the framework of a partnership agreement between the Jean Monnet University and their home university must register with their university. You must contact the international relations department of your institution which will officially nominate you.



Visa...

The pursuit of studies in France, for a long period, implies to have your situation regularized with the French authorities, except for EU students. The conditions vary depending on the length of your stay and your country of origin.

More information : <https://france-visas.gouv.fr/web/france-visas/etudiants>

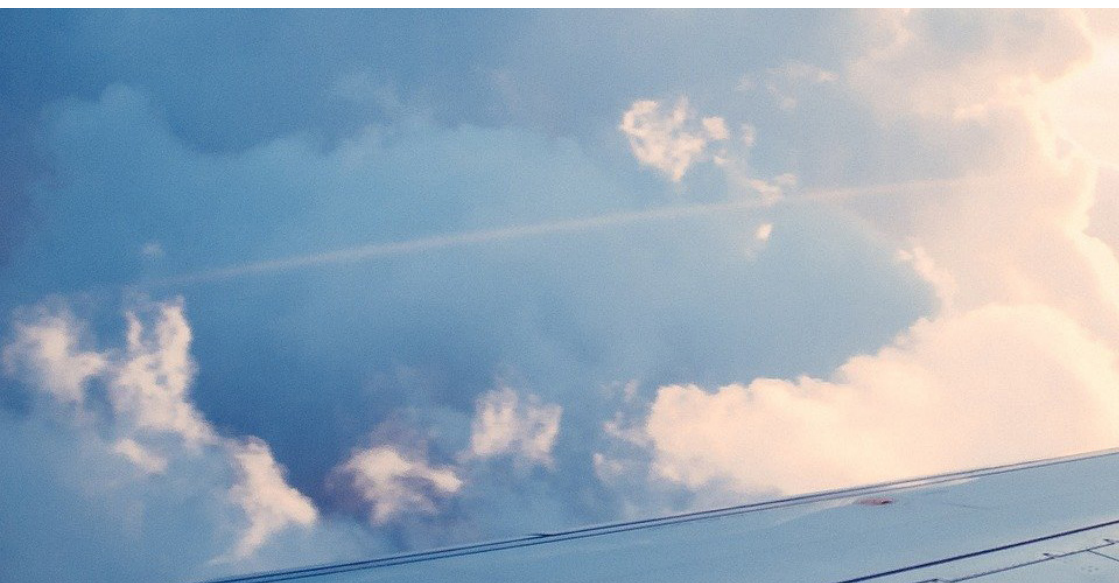
The visa application must be made at least 2 months before the departure to a French consulate in your country of residence.

For a period of less than 90 days, a short-stay visa can be requested to the French consulate of your country of origin. With this visa, a residence permit is not necessary, but it is not possible to renew it and does not allow you to receive housing benefits.

VALIDATE A LONG-STAY VISA EQUIVALENT TO A RESIDENT PERMIT STUDENT (VLS-TS)

You can make it online on the platform ANEF (Digital Administration of Foreigners in France) : <https://administration-etrangers-en-france.interieur.gouv.fr>

On this portal, you can validate your visa in a digital way and you will have to pay a resident tax (60€). After payment, the visa will be validated and you can download a certificate of validity.



... and residence permit

APPLYING A FIRST RESIDENCE PERMIT AS A STUDENT

This procedure is for those who do not hold a VLS-TS but a Long-Stay Visa «D», for one year with the words « Residence permit to be applied for within 2 months after arrival in France ».

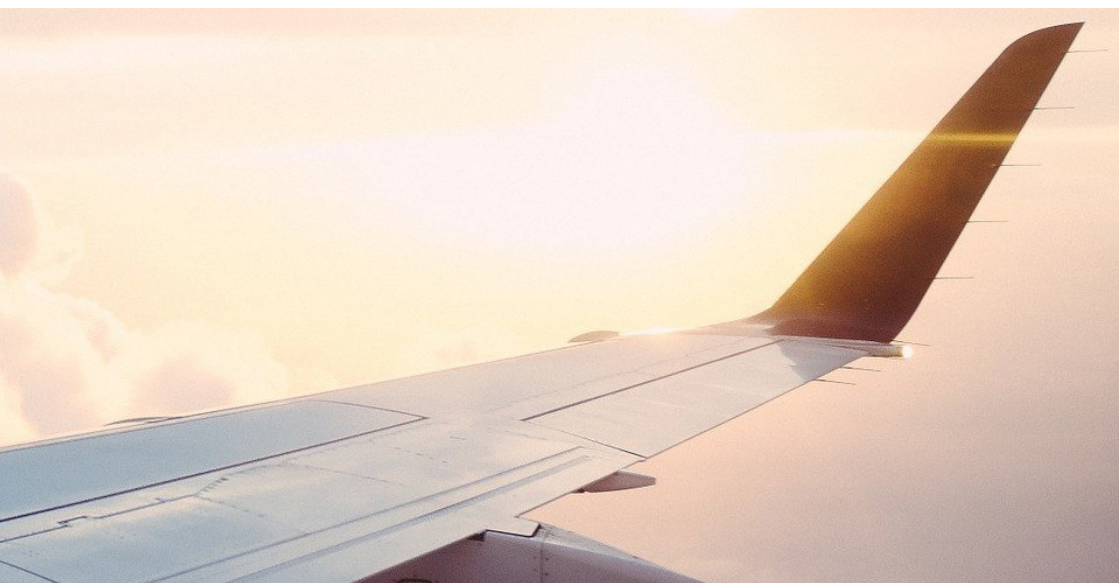
You apply online on the platform ANEF (Digital Administration of Foreigners in France).

If the file is considered fully complete by the Prefecture, you will be notified on your personal space by a certificate of approval. You will be requested to collect your residence permit. During this appointment, please do not forget to bring with you the original documents already provided when the file was fulfilled.

RENEWAL OF THE RESIDENCE PERMIT

If your residence permit has expired and you wish to continue your studies at UJM, you must apply for the renewal of your residence permit within 3 months before the expiration date of your residence permit, online, on the dedicated platform (ANEF).

Platform Digital Administration
of Foreigners in France - ANEF
> [https://administration-
etrangers-en-france.interieur.
gouv.fr](https://administration-etrangers-en-france.interieur.gouv.fr)



Financing your stay

Food, health, transports, hobbies... The cost of living can be high in France, especially in Paris and in major cities. It's better to estimate your budget before you go, in order to avoid troubles when you arrive.



FINANCING YOUR STAY WITH SCHOLARSHIPS

To fully enjoy your stay and to study in appropriate conditions, it is essential to plan your budget.

Ask your home University and the local authority of your country about financial supports and scholarships for study that you may apply to !

[Discover the Campus France lost of financial supports for foreign students](#)



FINDING JOB

It is possible to supplement your income when you study in France with a work in a company or at the University, regardless your level of study or your nationality. There are however some rules to observe:

- work no more than 964 hours a year (60% of the legal working duration / 50% for Algerian students)
- be a citizen of the European Union or have a student residence permit

In France, whether you are a student or not, a legal minimum salary is guaranteed:

- 0.25€ gross per hour / 8.20€ net

If you work 10 hours per week with the legal minimum salary, you will earn approximately 82€ net per week.

To find a job once you are registered at UJM
> [Jobaviz](#)
> [Career Center](#)



Cost of living in Saint-Etienne

In St Etienne, you can have access to a more peaceful student life, thanks to a low-cost budget! The cost of living is far less expensive here than in other major French cities. For an equivalent budget, you can find bigger accommodations, cheaper transports, affordable shows and outdoor activities...



OPENING A FRENCH BANC ACCOUNT

If you stay in France for more than 3 months, it would be more convenient to open a bank account.

It is very quick and easy to open your bank account!

After you have done it, you will have a RIB/IBAN that will allow you to transfer money. You will also need it for medical reimbursements, some scholarships you may have or more generally in your everyday life.

Two possibilities:

- you can open your bank account online
- you can open your bank account in one of the 120 bank agencies located in St Etienne

[Find out more information with the Campus France tutorial](#)

Health

In France, all students must be covered by a social security scheme.

EU STUDENTS

Before your departure, you must ask for your European Health Card to your social security insurance. With this card, you will be covered by the French Social Security.



NON-EU STUDENTS

As soon as you arrive in France and have obtained your registration certificate from a higher education establishment, you must register on the dedicated health insurance website etudiant-etranger.ameli.fr.

This will enable you to have your health costs covered in France.

Once you have made your request and submitted all the supporting documents (identity card, birth certificate, certificate of current schooling, IBAN, etc), you will be given a temporary number. Once your registration is validated, you will obtain a definitive social security number and you will be able to download an official certificate.

COMPLEMENTARY HEALTH INSURANCE

In addition to standard health cover, it is recommended to student to subscribe at a complementary health insurance or «mutuelle». This complementary protection covers all or a part of the health expenses not reimbursed.

If your income is low, you can apply for complementary health insurance solidarity scheme.

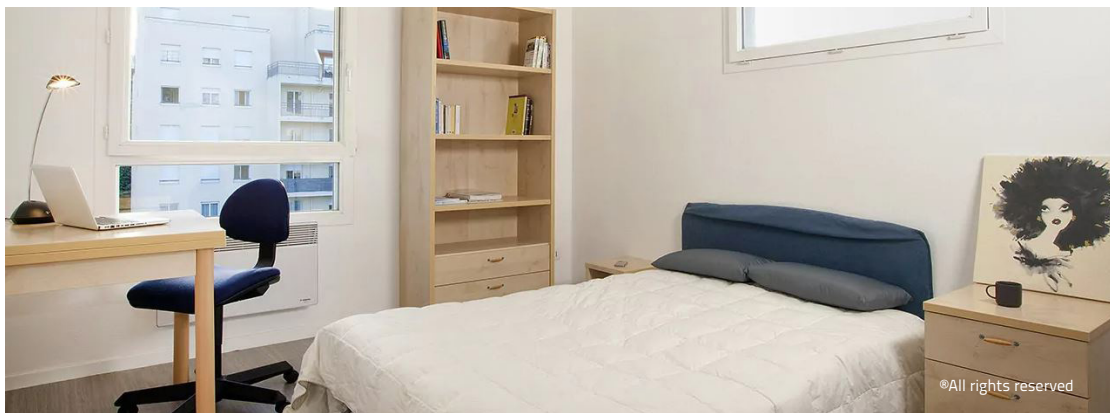
Accommodation in a private residence

You have the opportunity to find accommodation

- through an estate agency for a fee
- by contacting student residences
- by contacting private landlord via leboncoin.fr or bienseloger.com
- by sharing a flat on lacartedescolocs.fr, appartager.com, coloc-invest.com

Rent may be different according to the location, situation, surface area, state of maintenance, equipment and rental charges.

You can find below examples of student residences that you can contact.



©All rights reserved

NéoResid Tréfilerie

1 rue Edouard Vaillant
42100 Saint-Etienne

NéoResid Bellevue

82 Rue des Docteurs
Charcot
42100 Saint-Etienne

Le Littré

32 Rue Emile Littré
42100 Saint-Etienne

Résidence l'Atelier

3 Rue de la Corre
42100 Saint-Etienne

Résidence Campus Design

11 Rue Jouffroy
42000 Saint-Etienne

Résidence GreenBreak

6A Rue Victor Duchamp
42000 Saint-Etienne

Habitats Jeunes - Résidence Clairevivre

14 bis rue de Roubaix
42000 Saint-Etienne

Habitats Jeunes - le PAX

27 Rue Elisée Reclus
42000 Saint-Etienne

Résidence des Arts - Maison Internationale

11 rue Gambetta
42000 Saint-Etienne

■ GOOD TO KNOW !

For all rentals you must

- pay a security deposit
- provide a joint and several guarantee
- draw up an inventory of fixtures
- sign a rental agreement
- provide home insurance, often required when the lease is signed
- pay a council tax
- if you are a individual heating : take out a contract with an energy supplier and a boiler maintenance contract (100€/year)

■ THE GUARANTOR

In France, it is usual for landlords or estate agents to ask a guarantor for your accommodation.

This is a person who agree to pay your rent if you fail to do. He can be a company with whom you have a contract or a physical guarantor living in France.

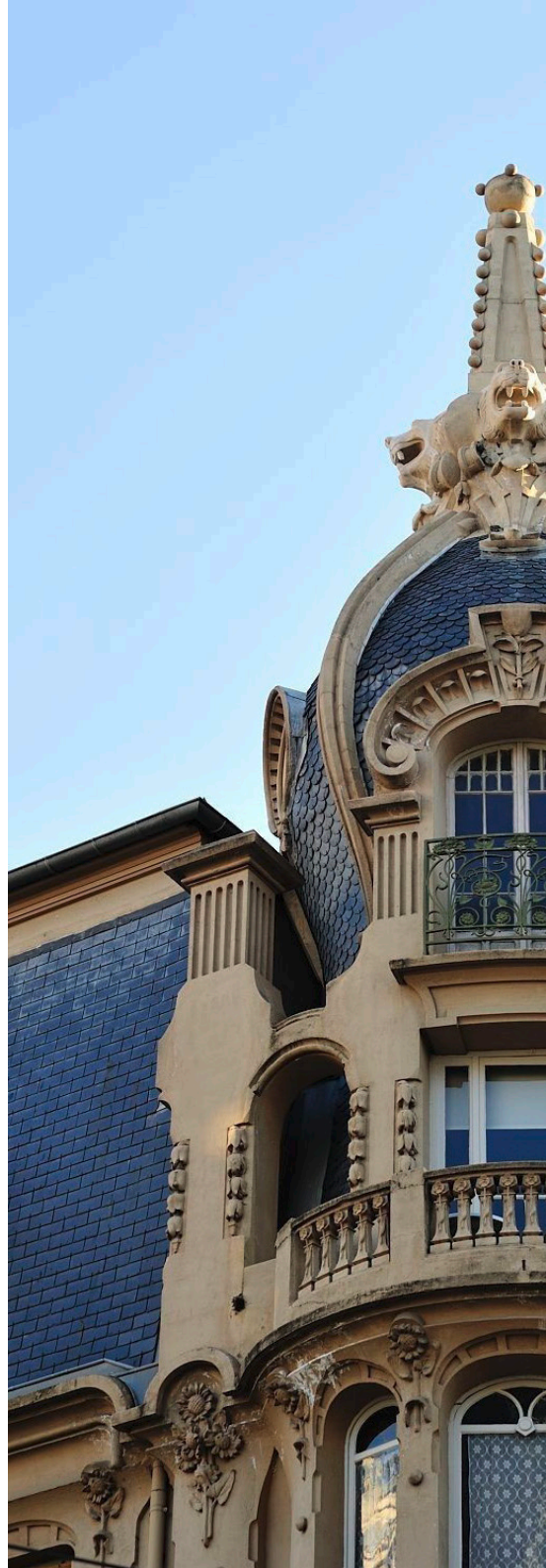
If you do not have a physical guarantor, you can ask for the VISALE guarantee. This is a free guarantee for students under 31 years old. If it is not accepted, companies, such as GarantMe, offers the same service through a paid insurance contract.

■ HOUSING ASSISTANCE

This financial aid is paid each month by the Caisse d'Allocations Familiales to help you pay your rent.

To apply for it :

- you must be resident in France for more than 3 months
- you are a EU resident or you have a French residence permit



Alternative accomodation



PRIVATE STUDENT RESIDENCES

The International Office has some rooms/accommodation at the CROUS for international students.

To make a request, send an email to welcome-student@univ-st-etienne.fr

HOST FAMILIES

This formula, not very common, allows you to be totally immersed in a family environment.

You will need to agree on the accommodation conditions.

The amount to be paid will be 690€ per month, per person, for accommodation in a room with full board.

To make a request, send an email to welcome-student@univ-st-etienne.fr

STUDYING AT JEAN MONNET UNIVERSITY

- Welcome on the campuses
- Take courses in French
- Sport activities
- Eating out
- Getting around
- Students associations
- Peer-to-peer student mentoring
- The Students Welcome Desk

Welcome on the campus

A specific welcome is offered at the beginning of the academic year by the International Office and certain faculties and schools.

For more information
> visit the pages of the International Office
> go to the website
<<Welcome to UJM>>



Take courses in French



The International Language and Civilization Center (CILEC) is the school of the Jean Monnet University dedicated to teaching French as a Foreign Language (FLE). If you want to improve your level of French and learn more about French culture, their courses are for you !



WHERE TO FIND US ?

CILEC
21, Denis Papin Street
42023 Saint-Etienne
Entrance 1, Second floor

+33 4 77 79 73
cilec@univ-st-etienne.fr
><https://cilec.univ-st-etienne.fr/>



OPENING HOURS

Monday : 8.30 am - 12.30 pm

Tuesday, Wednesday, Thursday
8:30 am - 12:30 pm
1:30 pm - 5 pm

Friday
8:30 am - 12:30 pm
1:30 pm - 4:30 pm

Sport activities

As a student from UJM you can easily practice a sport activity within the university premises. The SUAPS is the University Department who is in charge of the organisation and teaching of physical and sports activities.

The SUAPS offers you

- A free practice
- A rich offer of more than 45 activities
- The opportunity to obtain a bonus per semester/sport practice
- The organisation of sports events

Eating out

On each campus of UJM, you will find a student restaurant managed by the CROUS. On Trefilerie and Metare Campuses, the Resto'U is available for students. It offers a complete menu to choose from for only 3.30€.

For a quick bite to eat, the university has cafeterias on campuses.

Getting around

By walk, by scooter, by bike, by bus, by tram... the university campuses are all accessible by public transport.

As a student, take advantage of STAS transport in Saint-Etienne Metropole for only 10€ per month.



Students associations

Around sixty students associations make student life on the University's campuses. Cultural or social, union-based, these associations constitute a breeding ground of initiatives and ideas that enrich the life of the campuses. They allow you to participate actively in student life and to help you to benefit from different services offered. They work for and with you !

Find the directory of students associations

> on the UJM website
«Campus life» section



Peer-to-peer student mentoring

THE BUDDY SYSTEM

This mentoring is done between students for an help and cultural exchange during your stay.

> <https://buddysystem.eu/fr/>

UJM GREETERS PROGRAMME

This programme allows you to meet members (students and staff) of Jean Monnet University during a visit to the city, a coffee, a meal, a sporting or cultural activity, to share their culture, their country and discover Saint-Etienne and its inhabitants.

> <https://forms.gle/WnStel2PX8es22VEA>

YOUNG AMBASSADOR

If you are a Master's student in Saint-Etienne, you can become a young ambassador, a programme of sponsorship of international students by business leaders and members of local authorities and institutions to discover the city, his activities and to develop a project between Saint-Etienne and your country of origin.

> <https://www.jeunes-ambassadeurs.com/>



The Students Welcome Desk



The SWD welcomes you to guide you at your arrival at Saint-Etienne, to advise and to support you in your administrative procedures.

Welcome sessions in French and English are organised to inform, guide and support international students on issues such as health, accommodation, daily life, resident permit, etc.

Bienvenue à TOUS les étudiants

DU 1er au 29 septembre 2022
Les mardis de 9h à 13h00 | Les jeudis de 13h à 17h
La Comète – Espace Info Jeunes
7 Avenue Président Emile Loubet, 42000 Saint-Étienne

Permanences dans les établissements – Contactez vos services Relations Internationales

Contact : welcome-student@univ-st-etienne.fr
Info et chat sur Facebook : [@SWDsaintetienne](https://www.facebook.com/SWDsaintetienne)

Culture | Transport | Associations | Santé | Titre de séjour
Job | Logement | Orientation

We can answer your questions

From Monday to Thursday, 9 am - 12 pm and 2 pm - 5 pm
Friday, 9 am - 12 pm
At +33 4 77 43 79 68
Or on welcome-student@univ-st-etienne.fr
Or on Facebook [@SWDsaintetienne](https://www.facebook.com/SWDsaintetienne)

Cultural and discovery activities are available free of charge : welcome evening, language sessions, visits, etc



LIFE IN SAINT-ETIENNE

- Places to see
- Where to go ?
- Annual events
- Good deals

Places to see

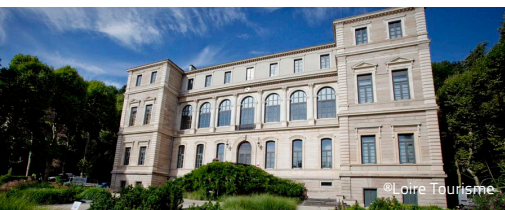
In 2000, St Etienne has become the first French city to obtain the label of 'City of Art and History' for its industrial heritage.



At the heart of the creative district, the City of Design raises awareness about the challenges and uses of Design.



The Puits Couriot is built on an old mine shaft transformed into an industrial museum about the life of coalminers, with an historical reconstitution of mining galleries.



The Museum of Art and Industry offers a great perspective into the industrial and social context of St Etienne, with collections about weapons, cycles and ribbons.



The Modern and Contemporary Art Museum is an international institution, with the widest contemporary art collection in France!



The Geoffroy-Guichard stadium is legendary in France! Visit the 'Musée des Verts' if you want to know why...



Le Corbusier, named after his famous architect, is the most important housing complex in Europe. You can find it in Firminy, just 15km away from St Etienne.

To find more about St Etienne and its surroundings, visit the [St Etienne Tourism Office website!](#)

Where to go ?

Saint-Etienne offers various possibility of cultural events. Theatres, cinemas, concerts, opera house, museums, expositions, festive events can be good opportunities with a concession for students.

- 4 cinemas, including an experimental films cinema
- A film library

- More than 10 venues
- One theatre
- One opera house
- A Center for scientific, technical and industrial culture, la Rotonde
- More than 12 bookshops
- 6 local multimedia libraries

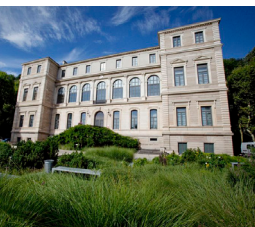
- Numerous bars and restaurants
- A dozen indoor and outdoor activity areas
- Several night-clubs

- Just a few minutes away from nature.

Culture, history, architecture, design, hiking, swimming, delicacies, so many promises that are offered to you in Saint-Etienne and surroundings.



Annual events



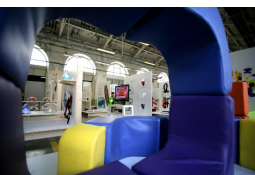
SEPTEMBER - OCTOBER

- European Researchers Night, researchers meet the general public
- Journées du Patrimoine (heritage days), free visits
- Science Festival, in numerous venues throughout the city
- Science Village, in the Saint-Étienne Rotonda, a space for playful exploration
- La Fête du Livre, book fairs for French literature



NOVEMBER-DECEMBER

- The SaintéLyon, a night race between Saint Etienne and Lyon, the most important nature raid in France
- Les Pléiades des Arts Numériques, artistic meetings of a new genre with the discovery of numeric works in the streets and shops
- Marché de Noël (Christmas market) and Sainte-Barbe Festival, a Saint-Étienne tradition with parade and fireworks



FEBRUARY-MARCH

- Festival of Burlesque Arts, the largest gathering for humor in France
- International Design Biennial, a major design event in France
- Festival des Curieux Voyageurs, the festival for curious travelers, a film festival for travelers and explorers with multiple events



MAY-JUNE

- Fest'U, the city's must-see university cultural event
- European Museum Night, another way to discover museums
- Fête de la Musique: Music everywhere in town
- Trax, a dance festival for hip-hop in all its forms and styles
- Festival Paroles et Musiques, a festival of French music



JULY-AUGUST

- The Couriot Before, in the park located at the base of the Mining Museum. An open-air dance hall ambiance and musical events
- Festival des 7 Collines, the 7 Hills multi-disciplinary festival centered on dance and the contemporary circus

AND MUCH MORE...

Good deals to know

During your stay, you can participate to the dynamic cultural life of Saint-Etienne, at a lower cost !

Sainte Pass is a website very useful. It allows you to cultural and sporting offers free of charge : concerts, cinemas, theatre, opera, games, festivals, museums, etc.

This service, reserved for young people up to 25 years old, is offered by the city of Saint-Etienne, in partnership with 80 cultural and sports establishments.

At the Jean Monnet University, you can get a cultural booklet. This checkbook offers you 50% concession in almost 60 cultural establishments in partnership with Saint-Etienne Metropole. You can buy up to two checkbooks as soon as your register at the university.



SAINTÉ MÉMO

You have made the right choice by coming to study in Saint-Etienne. With Sainté Memo, we explain explain why !

You will find: all the aid you can claim, the contacts of your contacts and also the your contacts, but also the best deals in the «Student life»...

Visit the website Sainté
Mémo or the app





A background image of a brown suitcase with a red and white floral pattern. Inside the suitcase, a map is visible. To the right of the suitcase, there are some blue and white items, possibly clothing or a bag. The entire image has a warm, orange-toned overlay.

USEFUL INFORMATION

- How to get to Saint-Etienne ?
 - Some tips !
 - Useful links
 - Contact, who to contact ?
-

How to get to Saint-Etienne ?



IN PLANE

FROM ONE OF THE PARIS AIRPORTS

From Paris, you have to take a train at the Gare de Lyon, going to Saint-Etienne.

FROM LYON SAINT-EXUPÉRY AIRPORT

Follow the signs at the airport to take the Rhôneexpress shuttle to Lyon-Part-Dieu station.

Departure every 20 minutes from 5am to midnight.

<http://www.rhoneexpress.fr>



BY BUS

FROM LYON SAINT-EXUPÉRY AIRPORT IN 40 MIN

Take a bus from the airport bus station. Remember to book well in advance, as there are only a few journeys available!

<https://www.blablacar.fr/>



BY TRAIN

FROM PARIS GARE DE LYON IN 3 HOURS

FROM LYON-PART-DIEU STATION IN 45 MIN

Buy a ticket from a self-service machine or from a ticket office. Check the notice boards to find the platform corresponding to the train you want to take. Do not forget to stamp your ticket before boarding the train, via the yellow machines in the stations.

Get off at Saint-Étienne Châteaureux station.

<https://www.sncf-connect.com/>



BY CAR/TAXI/CARPOOLING

FROM LYON SAINT-EXUPÉRY AIRPORT BY 40 MIN

Take a car/taxi/carpool from the airport exit to the A47 motorway and follow the signs to Saint-Etienne.



COMING TO JEAN MONNET AND INTERNATIONAL OFFICE BY TRAMWAY

FROM CHÂTEAUCREUX TRAIN STATION

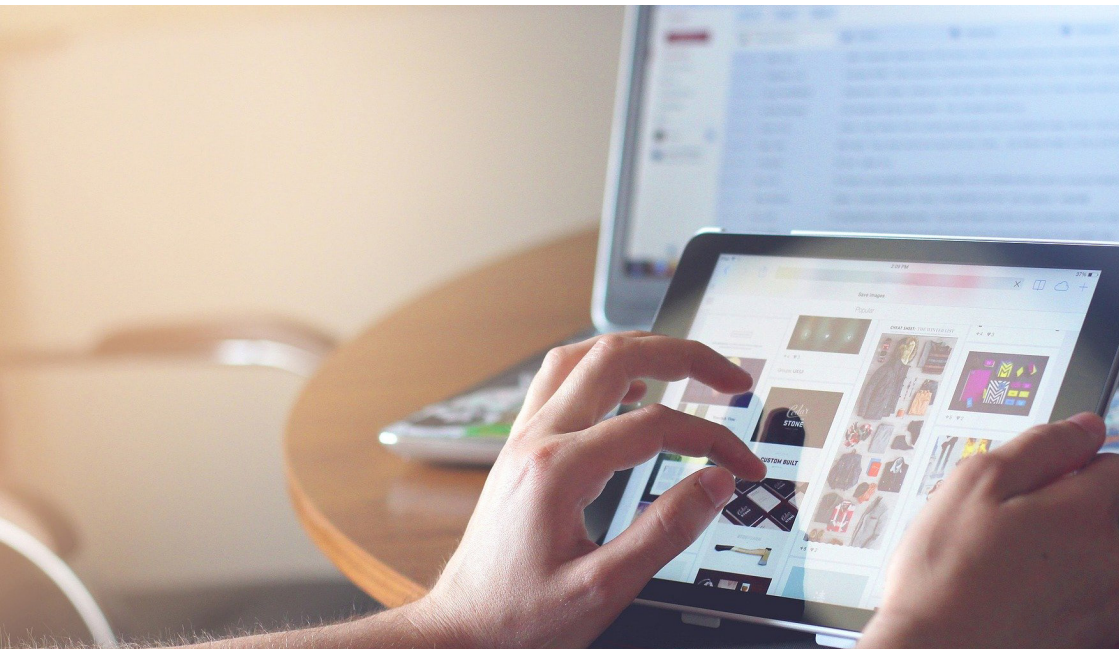
T3 Tram to Bellevue. Get off at Tréfilerie station.

FROM THE CITY CENTRE

T1 Tram to Solaure or Bellevue. Get off at Tréfilerie station.

Some tips !

- Prepare yourself for the language tests, review your vocabulary, etc.
- Find the right contacts to help you on your website, page contact
- Anticipate your search for accommodation and your administrative procedures before you leave (passport, insurance, bank...)
- Make a list of documents to take with you
- Evaluate your budget and future expenses
- Remember to make a copy of your personal papers
- Think about your return (accommodation, work, return to university, administrative procedures...)



Useful links

ADRESSES

ESPACE INFO JEUNES – SWD
7 Avenue Président Emile Loubet
42000 Saint-Étienne

PRÉFECTURE DE LA LOIRE
2 rue Charles de Gaulle
42022 Saint-Etienne

CAISSE D'ALLOCATION FAMILIALE
3 avenue Emile Loubet
42000 Saint-Etienne

CROUS
11 Rue Tréfilerie
42000 Saint-Etienne

CAISSE PRIMAIRE D'ASSURANCE MALADIE
1 parvis Pierre Laroque et Ambroise
Croizat
42022 Saint-Etienne

WEBSITE



www.campusfrance.org/en

www.univ-st-etienne.fr/

www.amelie.fr/

www.caf.fr/

www.crous-lyon.fr/

www.saint-etienne-metropole.fr/



Contact, who to contact ?

INTERNATIONAL OFFICE INTERNATIONAL MOBILITY OFFICE



WHERE TO FIND US ?

International Office
21, Denis Papin Street
42023 Saint-Etienne
First entrance, Second Floor



OPENING HOURS

Monday-Tuesday
Wednesday-Friday
8.30 am - 12.30 pm
1.30 pm - 5 pm

**Open only by appointment
on Thursday**

STUDENT MOBILITY FOR STUDY EUROPE	STUDENT MOBILITY FOR STUDY INTERNATIONAL	STUDENT MOBILITY FOR INTERNSHIP
+33 (0)4 77 43 79 65 erasmus-mob@ univ-st-etienne.fr	+33 (0)4 77 43 79 82 international-mob@ univ-st-etienne.fr	+33 (0)4 77 43 79 68 stage-mob@ univ-st-etienne.fr

IN FACULTIES SPECIFIC INTERNATIONAL RELATION DEPARTMENTS

MOBILITY STUDENT IN IUT OF SAINT-ETIENNE iutri@univ-st-etienne.fr	MOBILITY STUDENT IN IUT OF ROANNE iut-roanne-ri@univ-st-etienne.fr
MOBILITY STUDENT IN TELECOM SAINT-ETIENNE ri@telecom-st-etienne.fr	MOBILITY STUDENT IN IAE iae-ri@univ-st-etienne.fr



PEDAGOGICAL CONTACTS

For all pedagogical questions, you can contact the faculties directly. Specific international relations officers can also guide exchange students.

ALL	Marc DESMET	marc.desmet@univ-st-etienne.fr
DEPT	Aisling HEALY	aisling.healy@univ-st-etienne.fr
Droit	Benoît SCHMALTZ	benoit.schmatlz@univ-st-etienne.fr
IAE	Alexis CATANZARO	iae-ri@univ-st-etienne.fr
School of Economics	Richard BARON	richard.baron@univ-st-etienne.fr
IUT Roanne	Evelyne LEFEVRE	evelyne.lefevre@univ-st-etienne.fr iut-roanne-ri@univ-st-etienne.fr
IUT Saint-Etienne	Julien STRIGNANO	julien.strignano@univ-st-etienne.fr iutri@univ-st-etienne.fr
Medicine	Catherine MASSOUBRE	catherine.massoubre@univ-st-etienne.fr
FST	Science : Pierre MARET STAPS : Julie THOMAS	pierre.maret@univ-st-etienne.fr julie.thomas@univ-st-etienne.fr
SHS	Michel RAUTENBERG	michel.rautenberg@univ-st-etienne.fr
Télécom Saint-Etienne	Emilie GAMET	ri@telecom-st-etienne.fr

INTERNATIONAL OFFICE
21 rue Denis Papin
1st entrance - 2nd floor
42023 Saint-Etienne Cedex 2

Tel : +33 04 77 43 79 70



@pagecilec



@cilec_ujm



**UNIVERSITÉ
JEAN MONNET**
SAINT-ÉTIENNE



@UJMauboutdumonde



@SWDsaintetienne